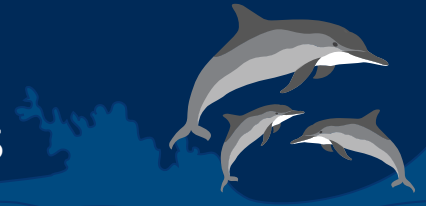




Hawaiian Spinner Dolphins

PROPOSED RULE TO ESTABLISH TIME-AREA CLOSURES



Get Involved

NOAA Fisheries is seeking comments from the public on the proposed rule to establish time-area closures. All comments must be received by December 27, 2021.

Submit Comments

- **Online:** <https://www.regulations.gov/commenton/NOAA-NMFS-2021-0091-0002>
- **Mail to:** Kevin Brindock, Deputy Assistant Regional Administrator, Protected Resources Division, National Marine Fisheries Service, Pacific Islands Regional Office, 1845 Wasp Blvd., Bldg. 176, Honolulu, HI 96818.
- **Virtual public hearing:** Thursday, December 9, 2021, 5 p.m. to 8 p.m. HST
 - Access and registration details are available online at <https://www.fisheries.noaa.gov/event/public-hearing-proposed-rule-establish-time-area-closures-hawaiian-spinner-dolphins-essential>
 - To participate via phone, dial US Toll +1-415-527- 5035; enter access code: 276 477 10691.

For More Information

Call 808-725-5146 or visit <https://www.fisheries.noaa.gov/action/proposed-rule-establish-time-area-closures-hawaiian-spinner-dolphins-essential-habitats-main>



What action is NOAA Fisheries taking?

On September 28, 2021, NOAA Fisheries published a proposed rule to establish time-area closures of Hawaiian spinner dolphins' essential daytime habitats from 6 a.m. to 3 p.m. daily.

Why is NOAA proposing these time-area closures?

During the day, spinner dolphins use near-shore areas to rest, nurture their young, and shelter from predators. In recent years these dolphins have faced intense pressure from dolphin-directed activities during their critical rest period. The proposed regulations are intended to prevent disturbance and harassment of Hawaiian spinner dolphins in areas identified as their essential daytime habitats.

Where would the proposed regulations apply?

The partial-day closures would apply to portions of the following bays:

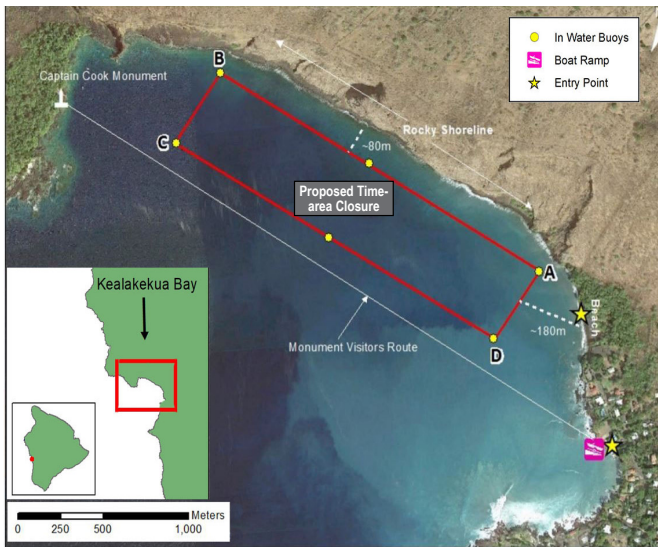
- Kealakekua Bay, Hawai'i Island
- Hōnaunau Bay, Hawai'i Island
- Kauhakō Bay, Hawai'i Island
- Makako Bay, Hawai'i Island
- La Perouse Bay, Maui

Proposed exceptions to the time-area closures include:

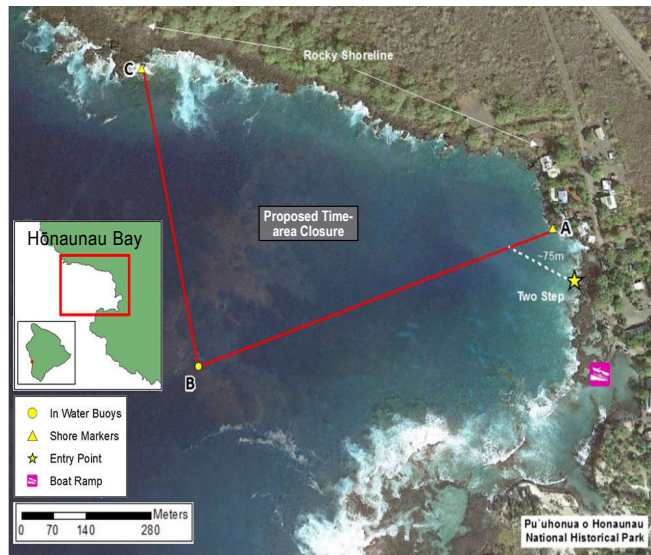
1. Vessel operations necessary to avoid an imminent and serious threat to a person or vessel
2. Activities authorized through a permit or authorization issued by NOAA Fisheries
3. Federal, State, or local government vessels, aircraft, personnel, and assets when necessary in the course of performing official duties
4. Vessels participating in organized community-based outrigger canoe races that transit straight through a time-area closure
5. Vessels that transit straight through the time-area closure for the sole purpose of ingress and egress to privately owned shoreline residential property located immediately adjacent to the time-area closure
6. Outrigger canoes used for traditional subsistence fishing intended for personal, family, or community consumption or traditional use

What are the next steps in the rulemaking process?

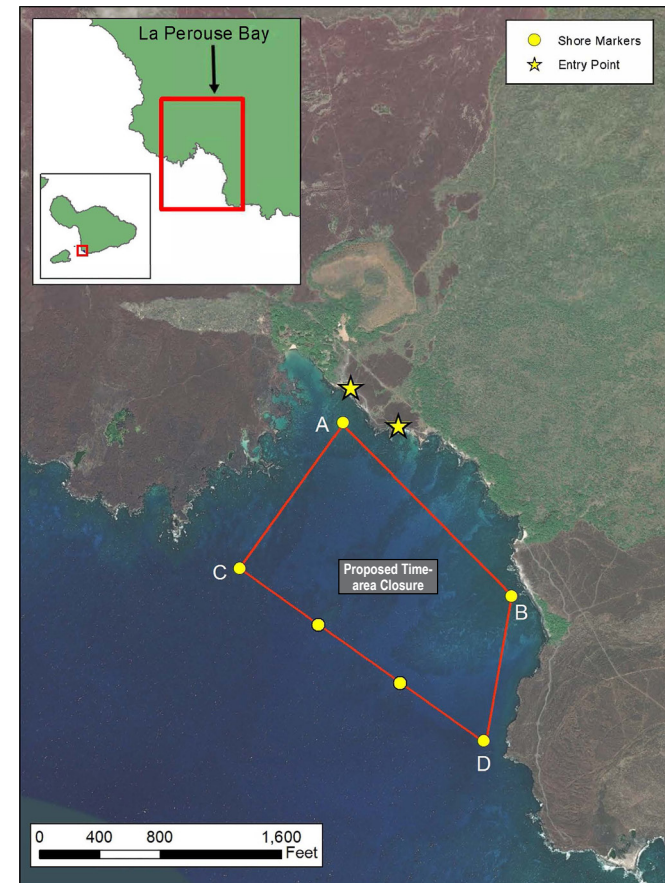
The proposed rule is open to public comments until December 27, 2021.



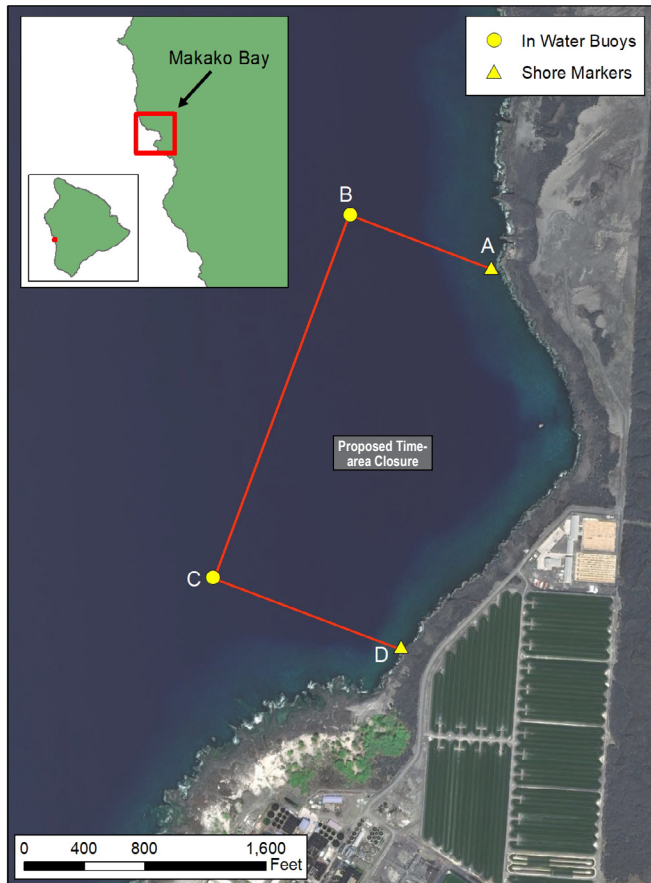
KEALAKEKUA BAY, HAWAII ISLAND



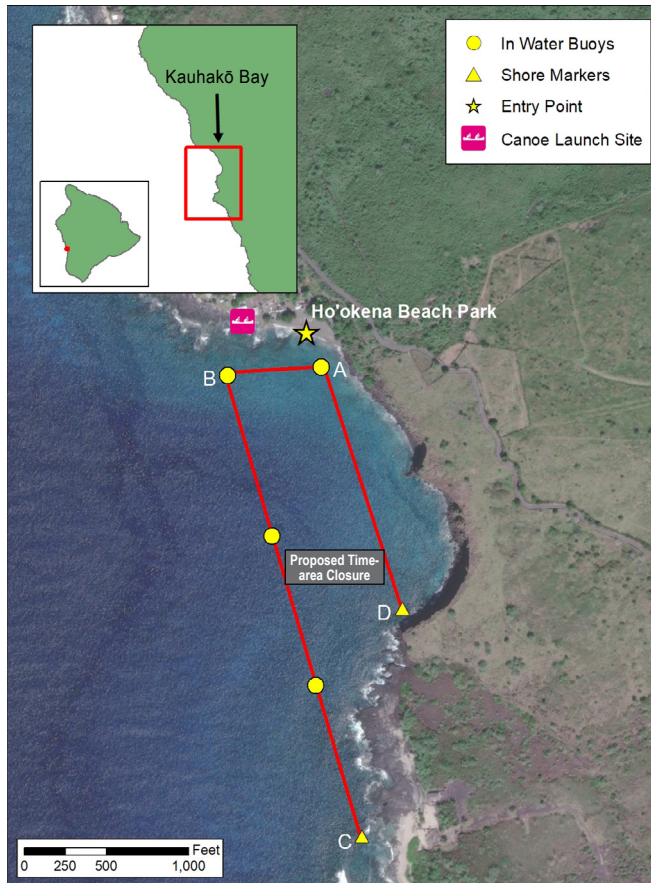
HŌNAUNAU BAY, HAWAII ISLAND



LA PEROUSE BAY, MAUI



MAKAKO BAY, HAWAII ISLAND



KAUHAKŌ BAY, HAWAII ISLAND